

DID YOU KNOW?

about our...



**MORE
SIZES +**

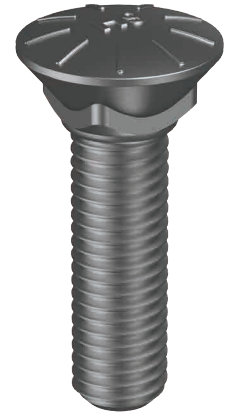
UNC Plow Bolt Square Neck

UNC PLOW BOLT SQUARE NECK GRADE 8 / HEC / PLAIN

Part	Size (inch)	Length (mm)	TPI
CBPG8PC0370100	3/8"	1"	16
CBPG8PC0370125	3/8"	1 1/4"	16
CBPG8PC0370150	3/8"	1 1/2"	16
CBPG8PC0370175	3/8"	1 3/4"	16
CBPG8PC0370200	3/8"	2"	16
CBPG8PC0370225	3/8"	2 1/4"	16
CBPG8PC0370250	3/8"	2 1/2"	16
CBPG8PC0370300	3/8"	3"	16
CBPG8PC0430100	7/16"	1"	14
CBPG8PC0430125	7/16"	1 1/4"	14
CBPG8PC0430150	7/16"	1 1/2"	14
CBPG8PC0430175	7/16"	1 3/4"	14
CBPG8PC0430200	7/16"	2"	14
CBPG8PC0430225	7/16"	2 1/4"	14
CBPG8PC0430250	7/16"	2 1/2"	14
CBPG8PC0430300	7/16"	3"	14
CBPG8PC0430350	7/16"	3 1/2"	14
CBPG8PC0500125	1/2"	1 1/4"	13
CBPG8PC0500150	1/2"	1 1/2"	13
CBPG8PC0500175	1/2"	1 3/4"	13
CBPG8PC0500200	1/2"	2"	13
CBPG8PC0500225	1/2"	2 1/4"	13
CBPG8PC0500250	1/2"	2 1/2"	13
CBPG8PC0500300	1/2"	3"	13
CBPG8PC0500350	1/2"	3 1/2"	13
CBPG8PC0500400	1/2"	4"	13



CBPG8PC



CBXG9PC



APPLICATIONS

- Securing the cutting edges of earthmoving blades

UNC PLOW BOLT STEPPED SQUARE NECK GRADE 9 / HEC / PLAIN

Part	Size (inch)	Length (mm)	TPI
CBXG9PC0620275	5/8"	2 3/4"	11



You can download this
Test Certificate and/or
Report from our website:

hobson.com.au

Disclaimer: While every reasonable effort has been made to ensure that this document is correct at the time of printing, Hobson Engineering®, its agencies and employees, disclaim any and all liability to any person in respect of anything or the consequences of anything done or omitted to be done in reliance upon the whole or any part of this document.

Page 1 of 3

Bolt Tension | Anti-Vibration | Product Reliability | Traceability

hobson.com.au **QUALITY FASTENERS SINCE 1935**



20182261DYK

DID YOU KNOW?

about our...



**MORE
SIZES +**

UNC Plow Bolt Square Neck

UNC PLOW BOLT SQUARE NECK GRADE 9 / HEC / PLAIN

Part	Size (inch)	Length (mm)	TPI
CBPG9PC0620150	5/8"	1 1/2"	11
CBPG9PC0620175	5/8"	1 3/4"	11
CBPG9PC0620200	5/8"	2"	11
CBPG9PC0620225	5/8"	2 1/4"	11
CBPG9PC0620250	5/8"	2 1/2"	11
CBPG9PC0620275	5/8"	2 3/4"	11
CBPG9PC0620300	5/8"	3"	11
CBPG9PC0620350	5/8"	3 1/2"	11
CBPG9PC0620400	5/8"	4"	11
CBPG9PC0620450	5/8"	4 1/2"	11
CBPG9PC0620500	5/8"	5"	11
CBPG9PC0750200	3/4"	2"	10
CBPG9PC0750225	3/4"	2 1/4"	10
CBPG9PC0750250	3/4"	2 1/2"	10
CBPG9PC0750275	3/4"	2 3/4"	10
CBPG9PC0750300	3/4"	3"	10
CBPG9PC0750325	3/4"	3 1/4"	10
CBPG9PC0750350	3/4"	3 1/2"	10
CBPG9PC0750375	3/4"	3 3/4"	10
CBPG9PC0750400	3/4"	4"	10
CBPG9PC0750450	3/4"	4 1/2"	10
CBPG9PC0750500	3/4"	5"	10
CBPG9PC0870225	7/8"	2 1/4"	9
CBPG9PC0870250	7/8"	2 1/2"	9
CBPG9PC0870275	7/8"	2 3/4"	9
CBPG9PC0870300	7/8"	3"	9
CBPG9PC0870325	7/8"	3 1/4"	9
CBPG9PC0870350	7/8"	3 1/2"	9
CBPG9PC0870400	7/8"	4"	9
CBPG9PC0870425	7/8"	4 1/4"	9
CBPG9PC0870500	7/8"	5"	9



CBPG9PC



APPLICATIONS

- Securing the cutting edges of earthmoving blades



You can download this
Test Certificate and/or
Report from our website:

hobson.com.au

Disclaimer: While every reasonable effort has been made to ensure that this document is correct at the time of printing, Hobson Engineering®, its agencies and employees, disclaim any and all liability to any person in respect of anything or the consequences of anything done or omitted to be done in reliance upon the whole or any part of this document.



DID YOU KNOW?

about our...



**MORE
SIZES +**

UNC Plow Bolt Square Neck

UNC PLOW BOLT SQUARE NECK GRADE 9 / HEC / PLAIN

Part	Size (inch)	Length (mm)	TPI
CBPG9PC1000275	1"	2 3/4"	8
CBPG9PC1000300	1"	3"	8
CBPG9PC1000325	1"	3 1/4"	8
CBPG9PC1000350	1"	3 1/2"	8
CBPG9PC1000375	1"	3 3/4"	8
CBPG9PC1000400	1"	4"	8
CBPG9PC1000450	1"	4 1/2"	8
CBPG9PC1000500	1"	5"	8
CBPG9PC1000550	1"	5 1/2"	8
CBPG9PC1250375	1 1/4"	3 3/4"	7
CBPG9PC1250387	1 1/4"	3 7/8"	7
CBPG9PC1250400	1 1/4"	4"	7
CBPG9PC1250412	1 1/4"	4 1/8"	7
CBPG9PC1250450	1 1/4"	4 1/2"	7
CBPG9PC1250500	1 1/4"	5"	7
CBPG9PC1250525	1 1/4"	5 1/4"	7
CBPG9PC1250600	1 1/4"	6"	7
CBPG9PC1250650	1 1/4"	6 1/2"	7
CBPG9PC1250700	1 1/4"	7"	7
CBPG9PC1370450	1 3/8"	4 1/2"	6
CBPG9PC1370550	1 3/8"	5 1/2"	6
CBPG9PC1370600	1 3/8"	6"	6



CBPG9PC



CBLG9PC

UNC PLOW BOLT LONG SHOULDER GRADE 9 / HEC / PLAIN

Part	Size (inch)	Length (mm)	TPI
CBLG9PC1000375	1"	3 3/4"	8



You can download this
Test Certificate and/or
Report from our website:

hobson.com.au

Disclaimer: While every reasonable effort has been made to ensure that this document is correct at the time of printing, Hobson Engineering®, its agencies and employees, disclaim any and all liability to any person in respect of anything or the consequences of anything done or omitted to be done in reliance upon the whole or any part of this document.

